

CERTIFICATE OF LOCATION OF GOVERNMENT CORNER

EAST QUARTER Corner of Section 1, Township 106, Range 40, 5TH P.M.

STATE OF MINNESOTA, County of MURRAY

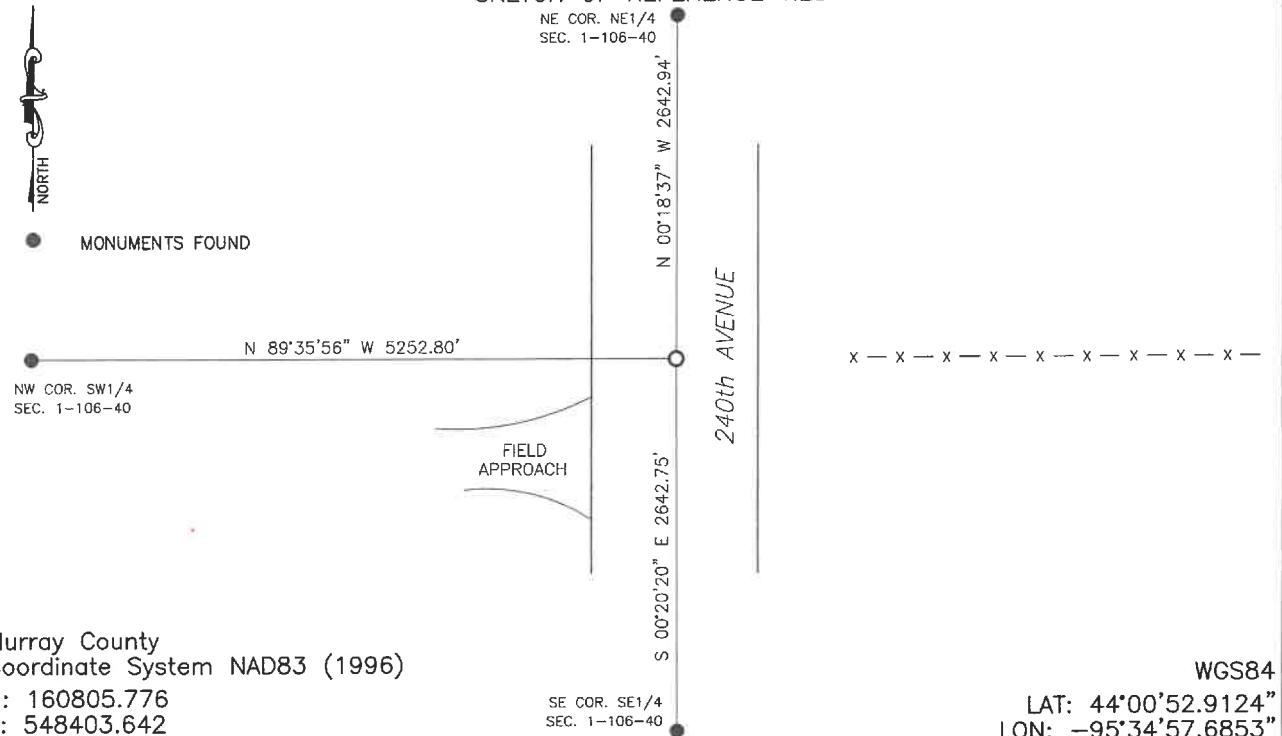
At the corner location shown on the sketch:

☐ On _____ found a _____
DATE

☐ left monument as found; ☐ lowered monument, ☐ removed monument (explain)

☒ On 1/30/2025 placed a 5/8" IRON WITH SEAL #43844
DATE

SKETCH OF REFERENCE TIES



Murray County
Coordinate System NAD83 (1996)
N: 160805.776
E: 548403.642

WGS84
LAT: 44°00'52.9124"
LON: -95°34'57.6853"

Statement of evidence relative to this corner location is on back of page.

I hereby certify that this document and the data contained herein was prepared by me or under my direct supervision.

Daniel L. Buettel
Daniel L. Buettel
License No. 43844

3/12/2025
DATE

MAR 13 2025

Karen Brown
MURRAY COUNTY RECORDER

Statement of Evidence

EAST QUARTER CORNER SECTION 1, T106N, R40W OF THE 5th P.M.

In 1861 J.W. Myers did the original survey of the township lines.

A survey of Section 6-106-39 by J.W. Woolstencroft, dated October 15, 1907, notes he found a stone and iron at the corner.

On July 11, 2011 Bueltel Moseng Land Surveying set a $\frac{5}{8}$ " iron online between section corners and single proportionate distance.

County records dated May 14, 2013 shows Zieske Land Surveying noted a 1.5" pipe at the corner.

On July 24, 2024 Bueltel-Moseng Land Surveying searched the area with a metal locator and found nothing, dug with backhoe in center line of the road and in line with the east-west fence line and found nothing. Local land owner stop by and told us that the road had been washed out and rebuilt within the last 10 years. Concluded the monument was lost.

January 30, 2025 and set $\frac{5}{8}$ " iron with seal #43844 single proportionate between section corners.